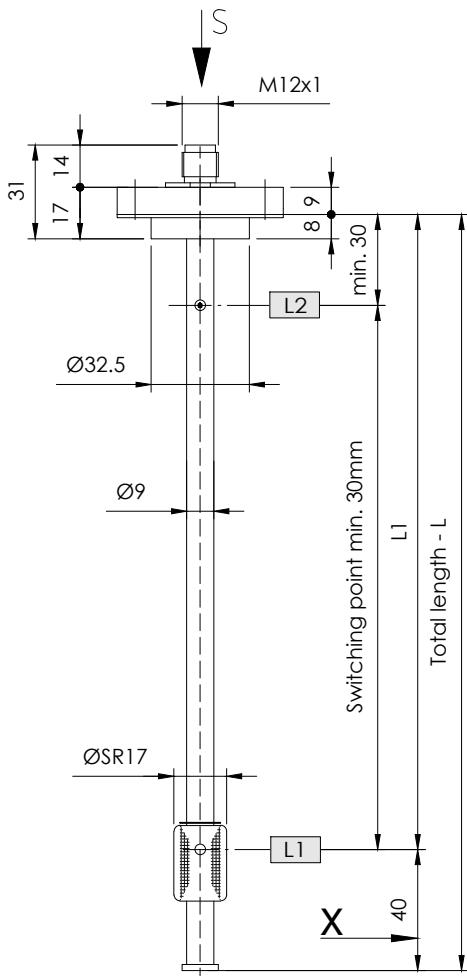


NR 25 / 50

Level regulator for tank insert

serial No. Date
IN - GB - 100B - 06/24



Minimum distance of the contacts see data sheet IN-D-003.

$$X = L1 + 1 \text{ Thermal contact} + 65\text{mm}$$

When ordering Pt100 / 1000 indication of connection II or III - conductors.

Order code

Specimen order

NR25 - L255-01M-L1/190/S-T/70Ö-M12-24V

Tank connection:
Flange NR25
Flange NR50

Switching point L1-L2/
mm from sealing edge
Ö = break
S = make
Function with
increasing level

Plug socket connector:
M12 - 24V
3+PE - DIN 43650

Operating voltage
VDC 10-36 = 24V

Total length-L
of switching tube(mm)

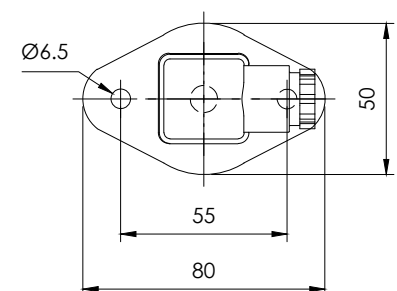
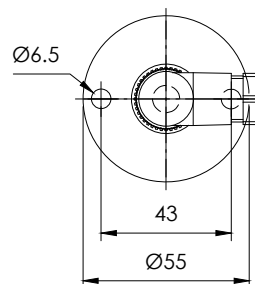
Level contact type
01M = fixed, plain

Pt100
Pt1000
Thermal contact
T10Ö
T40Ö
T50Ö
T60Ö (S) (preferred)
T70Ö (S) break
T80Ö (S)
T90Ö

View S - Flanges and Connectors

Flange NR25

Flange NR50



Description

The level regulator type NR 25 / 50 for tank insert is a solenoid switch operating without contact with the function of monitoring and regulating liquid levels and temperatures.

The switching tube contains bistable protective gas contacts, fixed in position. For fixed contacts, the contact intervals and their function must be given.

The permanent magnet built into the float switches the contacts when the level changes. The switching difference (hysteresis) is 4 mm. For temperature monitoring and regulation, thermal elements such as thermal contacts or Pt100 / Pt1000 can be additionally incorporated.

The level regulator is maintenance - free when nondeposit media are used.

For inductive loads, a protective circuit must be provided (free-wheeling diode/RC element).

The device must only be installed by specialists.

Max. viscosity 150mm²/S

Technical data

Switching tube
Connection

Brass, max. L = 800mm
Flange NR25: Aluminium
Flange NR50: Polyamide
with flat seal

Nominal pressure
Temperature of medium

1 bar max.
100°C max.

Float

SR17 - NBR

Medium density

0,80 kg/dm³ min.

Level contacts

Make / Break contacts

Operating voltage

36V DC

Switching current

max. 0,5A

Switching capacity

max. 5W/VA

Thermal elements

Pt100 / Pt1000 DIN EN 60751

Thermal contacts

Datasheet: IN-D-005

Switchpoint: ± 5K

Hysteresis: 20K ± 5K

max. 2 can be incorporated

vertical ± 30°

Number of functions

Mounting position

Technical data



GOLDAMMER
REGELUNGSTECHNIK GMBH

SCHÖLLERSHEIDER STR. 15
POSTFACH 10 02 17
D-40802 METTMANN

TELEFON 02104/12093
TELEFAX 02104/12028

www.Goldammer-Regelungstechnik.com
info@goldammer-regelungstechnik.com

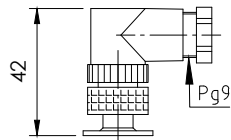
Level regulator

Plug variants and terminal pin assignment

serial No. Date
IN - GB - 100B - 03/23

Standard pin assignment
 Function with increasing level / temperature

Plug connection
 M12 IP67
 5-polig



Plug connection
 3+PE IP65
 EN 175301-803
 (DIN 43650)

