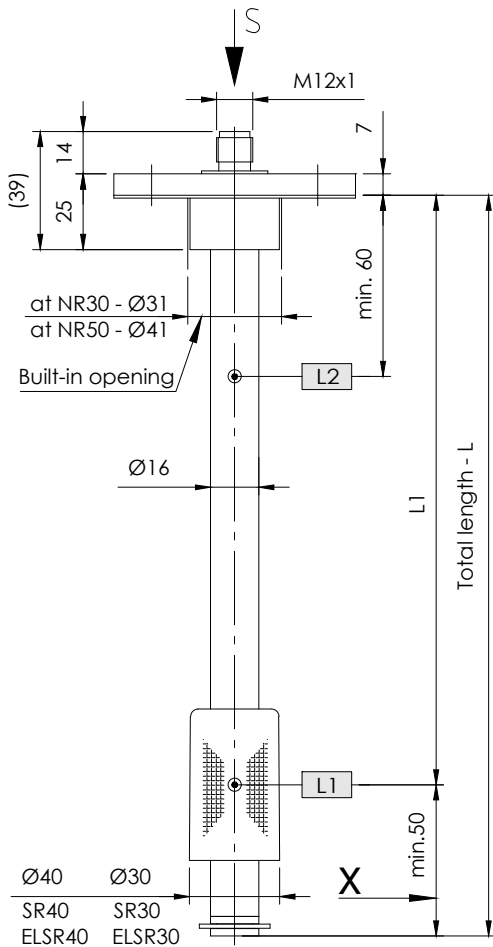


NR 30 / 50

Level regulator for tank insert

serial No. Date
IN - GB - 101 - 05/23



Minimum distance of the contacts see data sheet IN-D-003/004.

X = L1 - L2 (01/03) + 1 Thermal contact + 70mm
 L1 - L2 (02/04) + 1 Thermal contact + 80mm
 L1 - L2 + Pt100 / 1000 + 60mm
 When ordering Pt100 / 1000 indication of connection II / III / IV- conductors.

Order code

Specimen order

NR30-SR30-L370-03-L1/300/S-T70Ö-MS-M12-24V

Tank connection:
Flange NR30
Flange NR50

Float type
SR30
EL SR30
SR40
EL SR40

Total length-L
of switching tube(mm)

Level contact type
OK=cordless contact (max.500mm)
01 = fixed, plain
02 = fixed, changeover
03 = adjustable, plain
04 = adjustable, changeover
(max. 2 functions)

Switching point L1-L3/
mm from sealing edge
Ö = break
S = make
W = changeover
Function with
increasing level

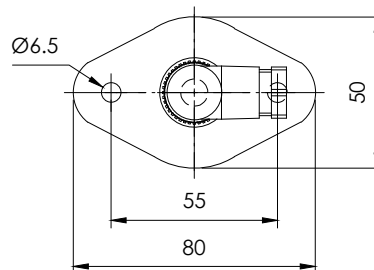
Pt100
Pt1000
Thermal contact
T10Ö
T40Ö
T50Ö
T60Ö (S)
T70Ö (S) (preferred
break)
T80Ö (S)
T90Ö
(Indicate T1... - T2... for
two thermal contacts)

Plug socket connector:
M12 - 24V
3+PE-DIN 43650
3 pol. + PE
6+PE-DIN 43651
6 pol. + PE

Operating voltage
VDC 10-36 = 24V
VAC 10-230 = 250V

Execution:
MS -Brass
VA - Stainless steel
VAPA - Flange - PA
- Switching tube - VA
(PA - Polyamide)

View S -
Example Flange NR30/50 and Connector



Description

The level regulator type NR 30 / 50 for tank insert is a solenoid switch operating without contact with the function of monitoring and regulating liquid levels and temperatures. The switching tube contains bistable protective gas contacts. They may be fixed or alternatively mounted as an adjustable contact cartridge on a perforated strip. For fixed contacts, the contact intervals and their functions must be given. Plain contact cartridges can be subsequently adjusted for height. The function of make or break can then be altered by turning the cartridge through 180° degrees. The permanent magnet built into the float switches the contacts when the level changes. The switching difference (hysteresis) is 4 mm. For temperature monitoring and regulation, thermal elements such as Pt100 / Pt1000 and thermal contacts can be additionally incorporated. The level controller is maintenance - free when nondeposit media are used. For inductive loads, a protective circuit must be provided (free-wheeling diode/RC element).

The device must only be installed by specialists.

Max. viscosity 150mm²/S

Technical data

Switching tube	Brass (MS), Stainless steel (VA) max. L = 800mm
Connection flange	NR30 / NR50, (PA) Polyamide with flat seal
Nominal pressure	1 bar max.
Temperature of medium	100°C max.
Float	Hard PU, Type: SR30 / SR40 Ceramic, Type: ELSR30 / ELSR40 0,80 kg/dm ³ min.
Medium density	bistable make / break / changeover optional fixed or adjustable
Level contacts	250V AC /DC max. Datasheet: IN-GB-003/004
Operating voltage	Pt100 / Pt1000 DIN EN 60751
Contact details	Datasheet: IN-GB-005
Thermal elements	Switchpoint: ± 5K Hysteresis: 20K ± 5K
Thermal contacts	max. 3 can be incorporated
Number of functions	vertical ± 30°
Mounting position	

Technical data



GOLDAMMER
REGELUNGSTECHNIK GMBH

SCHÖLLERSHEIDER STR. 15
POSTFACH 10 02 17
D-40802 METTMANN

TELEFON 02104/12093
TELEFAX 02104/12028

www.Goldammer-Regelungstechnik.com
info@goldammer-regelungstechnik.com

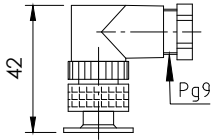
Level regulator

Plug variants and terminal pin assignment

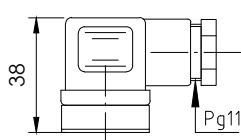
serial No. Date
IN - GB - 101 - 05/23

Standard pin assignment
Function with increasing level / temperature

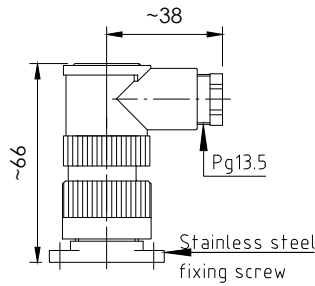
Plug connection
M12 IP67
5-polig



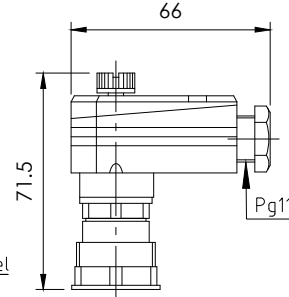
Plug connection
3+PE IP65
EN 175301-803
(DIN 43650)



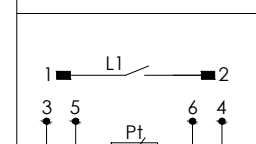
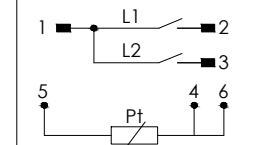
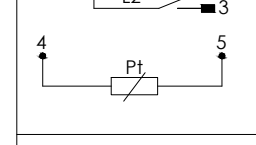
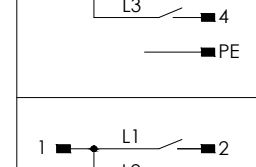
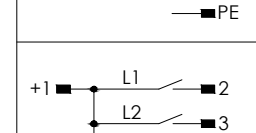
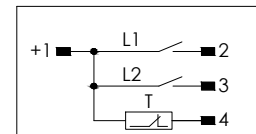
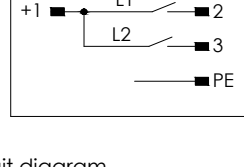
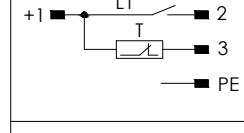
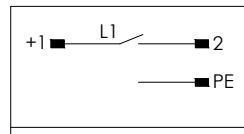
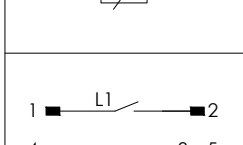
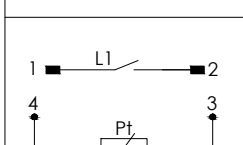
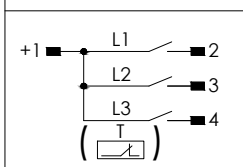
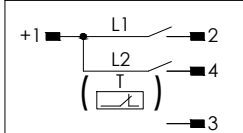
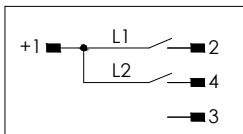
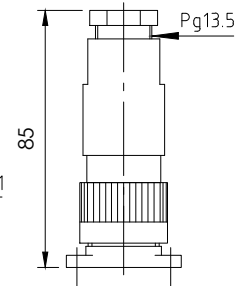
Plug connection
3 pol.+PE
IP67



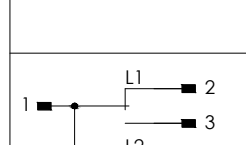
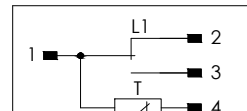
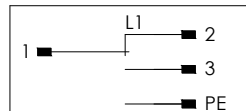
Plug connection
6+PE IP65
EN 175201-804
(DIN 43651)



Plug connection
6 pol.+PE
IP67



Circuit diagram
02 = fixed-changeover / 04 = adjustable-changeover



Circuit diagram
02 = fixed-changeover /
04 = adjustable-changeover

