

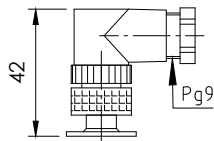
Niveauregler

Steckervarianten und Anschlussbelegung

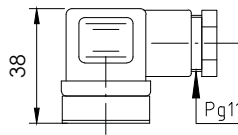
lfd.Nr. Datum
IN - D - 106A - 08/23

Standard Anschlussbelegung
Funktionen bei steigendem Niveau / Temperatur

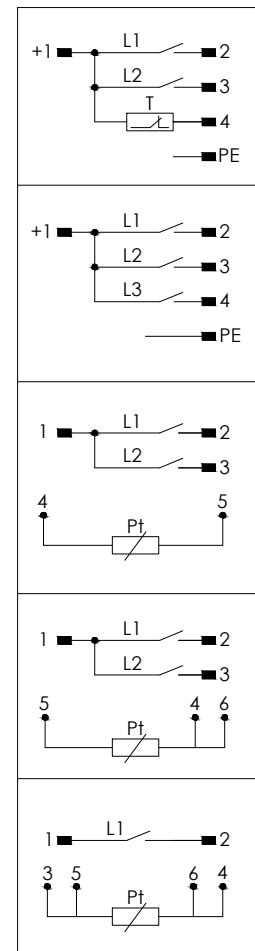
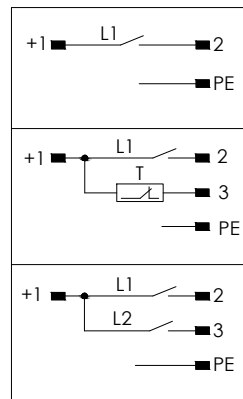
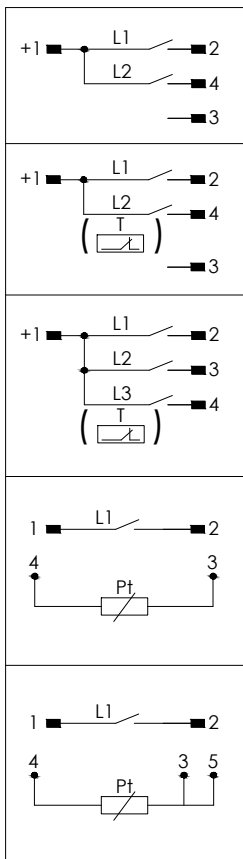
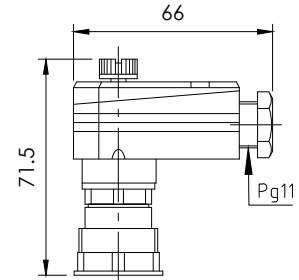
Steckverbindung
M12 IP67
5-polig



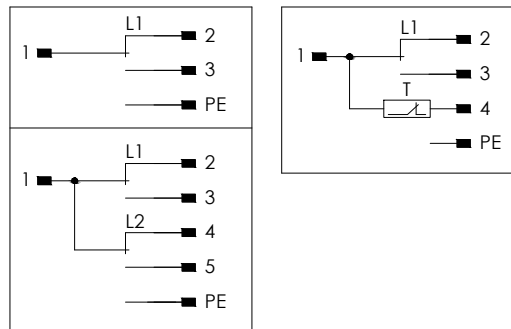
Steckverbindung
3+PE IP65
EN 175301-803
(DIN 43650)



Steckverbindung
6+PE IP65
EN 175201-804
(DIN 43651)



Schaltbild
02 = Fest-Wechsler / 04 = Einstellbar-Wechsler



Schaltbild
02 = Fest-Wechsler /
04 = Einstellbar-Wechsler

