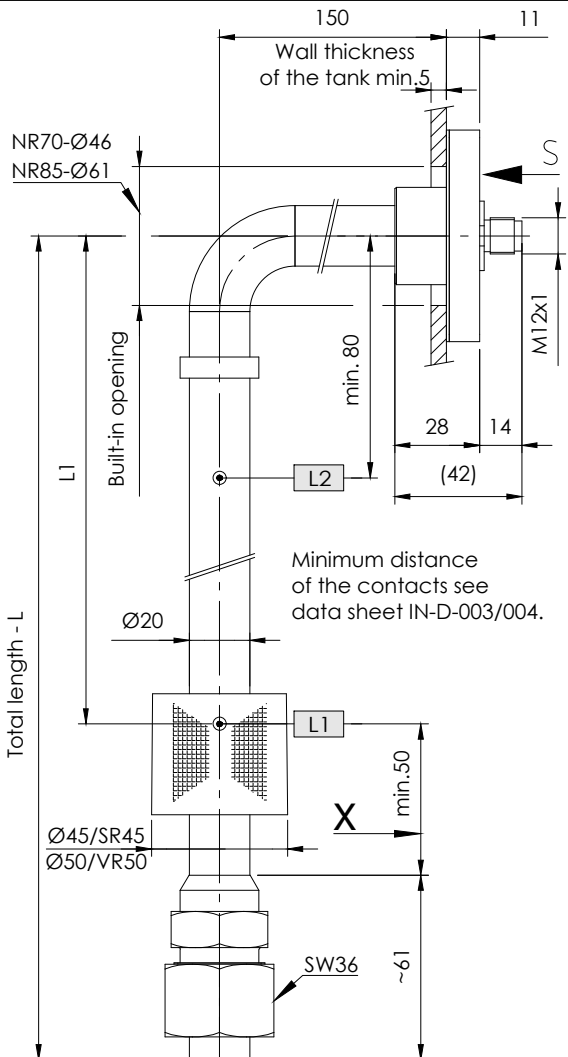


NR 70 / 85 - V

Level regulator for tank insert

serial No. Date
IN - GB - 106A - 08/23



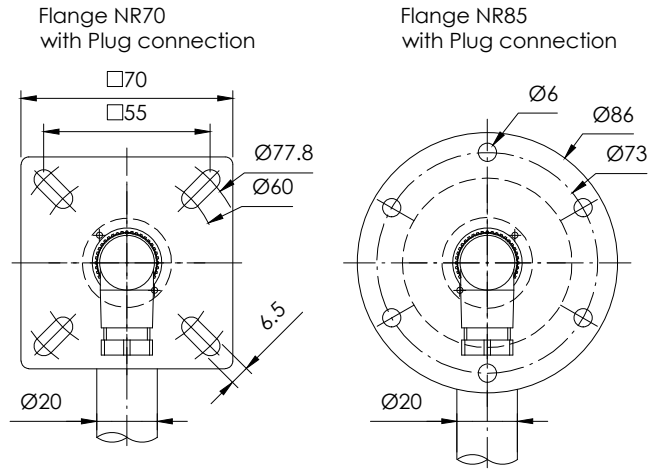
Order code

Specimen order
NR70-V-SR45-L370-03-L1/300/S-T70Ö-M12-24V

<p>Tank connection: Flange NR70 Flange NR85</p>	<p>Switching point L1-L3/ mm from sealing edge Ö = break S = make W = changeover Function with increasing level</p>	<p>Plug socket connector: M12 - 24V 3+PE-DIN 43650 6+PE-DIN 43651</p>
<p>Float type SR45 VR50</p>	<p>Total length-L of switching tube(mm)</p>	<p>Operating voltage VDC 10-36 = 24V VAC 10-230 = 250V</p>
<p>Level contact type 01 = fixed, plain 02 = fixed, changeover 03 = adjustable, plain 04 = adjustable, changeover</p>		<p>Pt100 Pt1000 Thermal contact T10Ö T40Ö T50Ö T60Ö (S) T70Ö (S) (preferred break) T80Ö (S) T90Ö (Indicate T1... - T2... for two thermal contacts)</p>

X = L1 - L3 (01/03) + 1 Thermal contact + 70mm
L1 - L2 (02/04) + 1 Thermal contact + 80mm
L1 - L4 + Pt100 / 1000 + 60mm
 When ordering Pt100 / 1000
 indication of connection II / III / IV- conductors.

View S



Description

The level regulator type NR 70 / 85 - V for tank insert is a solenoid switch operating without contact with the function of monitoring and regulating liquid levels and temperatures. The switching tube contains bistable protective gas contacts. They may be fixed or alternatively mounted as an adjustable contact cartridge on a perforated strip. For fixed contacts, the contact intervals and their functions must be given. Plain contact cartridges can be subsequently adjusted for height. The function of make or break can then be altered by turning the cartridge through 180° degrees. The permanent magnet built into the float switches the contacts when the level changes. The switching difference (hysteresis) is 4 mm. For temperature monitoring and regulation, thermal elements such as Pt100 / Pt1000 and thermal contacts can be additionally incorporated. The level controller is maintenance - free when nondeposit media are used. For inductive loads, a protective circuit must be provided (free-wheeling diode/RC element). The device must only be installed by specialists.

Max. viscosity 320mm²/S.

Technical data

Switching tube	Stainless steel (VA) max. L = 2000mm
Connection flange	NR70 / NR85 - Stainless steel (VA) with flat seal
Nominal pressure	1 bar max.
Temperature of medium	100°C max.
Float	Hard PU, Type: SR45 Stainless steel, Type: VR50 0,80 kg/dm ³ min. bistable make / break / changeover optional fixed or adjustable
Medium density	250V AC / DC max.
Level contacts	Datasheet: IN-GB-003/004 Pt100 / Pt1000 DIN EN 60751 Datasheet: IN-GB-005
Operating voltage	Switchpoint: ± 5K
Contact details	Hysteresis: 20K ± 5K
Thermal elements	max. 4 can be incorporated
Thermal contacts	vertical ± 30°
Number of functions	
Mounting position	

Technical data



SCHÖLLERSHEIDER STR. 15 TELEFON 02104/12093
 POSTFACH 10 02 17 TELEFAX 02104/12028
 D-40802 METTMANN www.Goldammer-Regelungstechnik.com
 info@goldammer-regelungstechnik.com

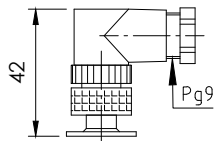
Level regulator

Plug variants and terminal pin assignment

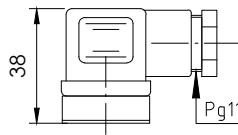
serial No. Date
IN - GB - 106A - 08/23

Standard pin assignment
Function with increasing level / temperature

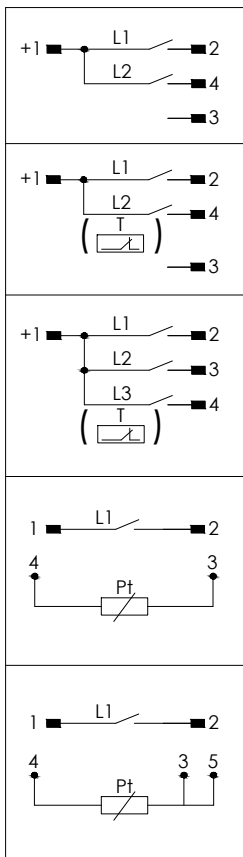
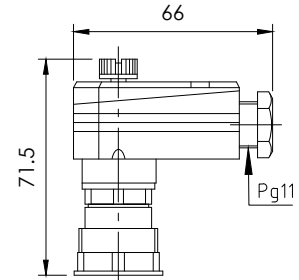
Plug connection
M12 IP67
5-polig



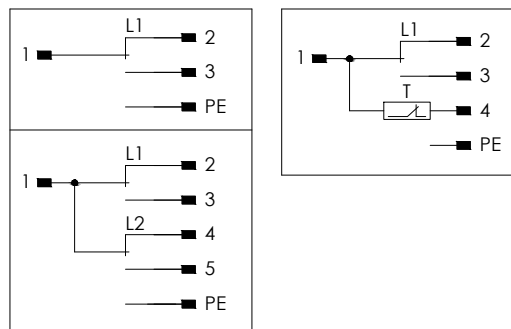
Plug connection
3+PE IP65
EN 175301-803
(DIN 43650)



Plug connection
6+PE IP65
EN 175201-804
(DIN 43651)



Circuit diagram
02 = fixed-changeover / 04 = adjustable-changeover



Circuit diagram
02 = fixed-changeover /
04 = adjustable-changeover

