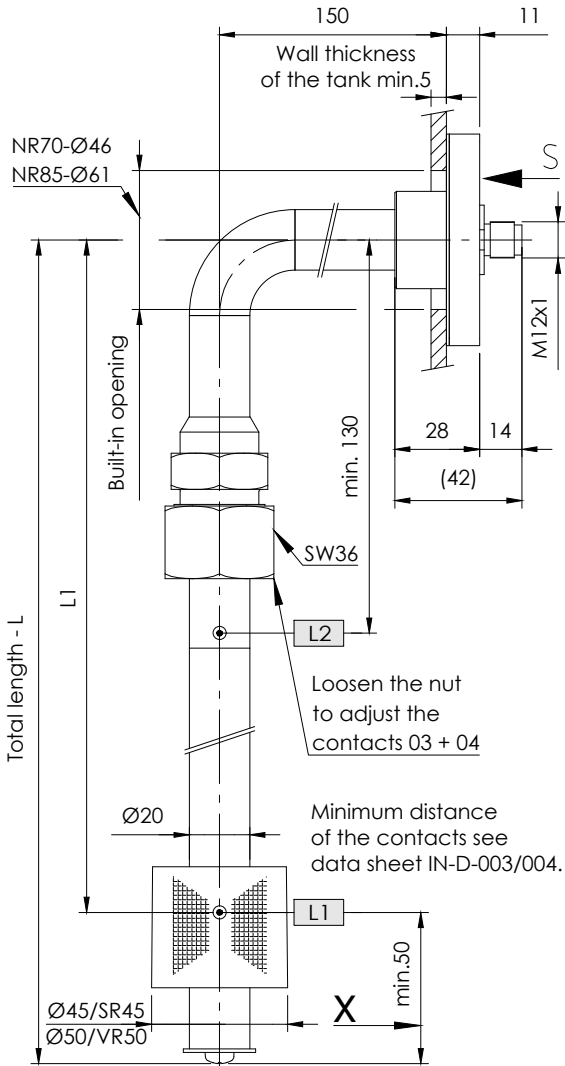


# NR 70 / 85 - V

## Level regulator for tank insert

serial No. Date  
IN - GB - 106 - 08/23



**X = L1 - L3 (01/03) + 1 Thermal contact + 70mm**  
**L1 - L2 (02/04) + 1 Thermal contact + 80mm**  
**L1 - L4 + Pt100 / 1000 + 60mm**  
 When ordering Pt100 / 1000  
 indication of connection II / III / IV- conductors.

Order code

### Specimen order

**NR70-V-SR45-L370-03-L1/300/S-T70Ö-M12-24V**

Tank connection:  
Flange NR70  
Flange NR85

Float type  
SR45  
VR50

Total length-L  
of switching tube(mm)

Level contact type  
01 = fixed, plain  
02 = fixed, changeover  
03 = adjustable, plain  
04 = adjustable, changeover

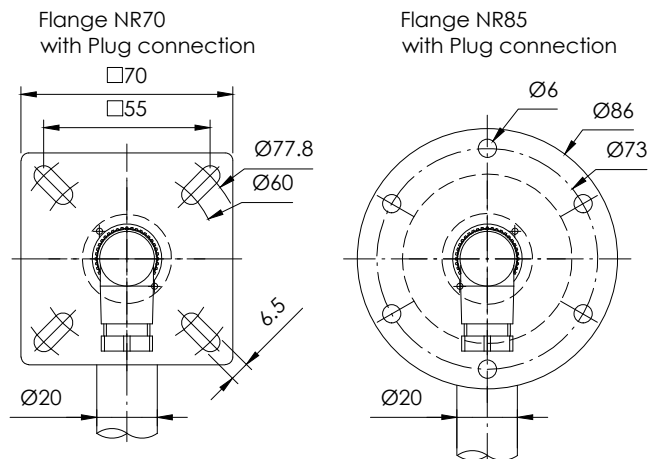
Switching point L1-L3/  
mm from sealing edge  
Ö = break  
S = make  
W = changeover  
Function with  
increasing level

Plug socket connector:  
M12 - 24V  
3+PE-DIN 43650  
6+PE-DIN 43651

Operating voltage  
VDC 10-36 = 24V  
VAC 10-230 = 250V

Pt100  
Pt1000  
Thermal contact  
T1Ö  
T40Ö  
T50Ö  
T60Ö (S)  
T70Ö (S) (preferred  
break)  
T80Ö (S)  
T90Ö  
(Indicate T1... - T2... for  
two thermal contacts)

### View S



## Description

The level regulator type NR 70 / 85 - V for tank insert is a solenoid switch operating without contact with the function of monitoring and regulating liquid levels and temperatures. The switching tube contains bistable protective gas contacts. They may be fixed or alternatively mounted as an adjustable contact cartridge on a perforated strip. For fixed contacts, the contact intervals and their functions must be given. Plain contact cartridges can be subsequently adjusted for height. The function of make or break can then be altered by turning the cartridge through 180° degrees. The permanent magnet built into the float switches the contacts when the level changes. The switching difference (hysteresis) is 4 mm. For temperature monitoring and regulation, thermal elements such as Pt100 / Pt1000 and thermal contacts can be additionally incorporated. The level controller is maintenance - free when nondeposit media are used. For inductive loads, a protective circuit must be provided (free-wheeling diode/RC element). The device must only be installed by specialists.

Max. viscosity 320mm<sup>2</sup>/S.

## Technical data

Switching tube

Connection flange

Nominal pressure  
Temperature of medium  
Float

Medium density  
Level contacts

Operating voltage  
Contact details  
Thermal elements

Thermal contacts

Number of functions  
Mounting position

Stainless steel (VA)  
max. L = 2000mm

NR70 / NR85 - Stainless steel (VA)  
with flat seal

1 bar max.  
100°C max.

Hard PU, Type: SR45  
Stainless steel, Type: VR50

0,80 kg/dm<sup>3</sup> min.  
bistable make / break / changeover

optional fixed or adjustable  
250V AC / DC max.

Datasheet: IN-GB-003/004  
Pt100 / Pt1000 DIN EN 60751

Datasheet: IN-GB-005

Switchpoint: ± 5K

Hysteresis: 20K ± 5K

max. 4 can be incorporated  
vertical ± 30°

Technical data



**GOLDAMMER**  
REGELUNGSTECHNIK GMBH

SCHÖLLERSHEIDER STR. 15  
POSTFACH 10 02 17  
D-40802 METTMANN

TELEFON 02104/12093  
TELEFAX 02104/12028

www.Goldammer-Regelungstechnik.com  
info@goldammer-regelungstechnik.com

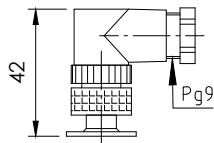
# Level regulator

## Plug variants and terminal pin assignment

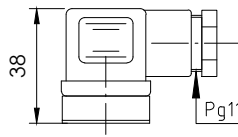
serial No.    Date  
**IN - GB - 106 - 08/23**

Standard pin assignment  
 Function with increasing level / temperature

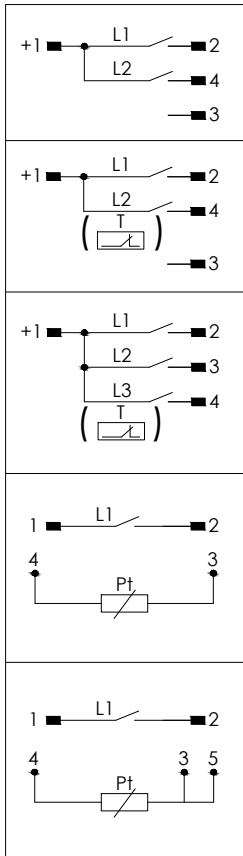
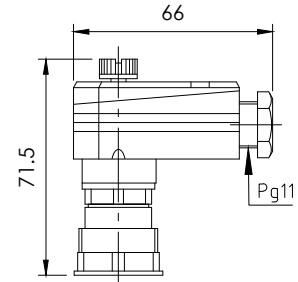
Plug connection  
 M12 IP67  
 5-polig



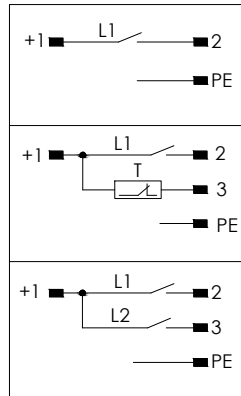
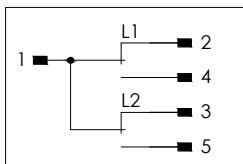
Plug connection  
 3+PE IP65  
 EN 175301-803  
 (DIN 43650)



Plug connection  
 6+PE IP65  
 EN 175201-804  
 (DIN 43651)



Circuit diagram  
 02 = fixed-changeover /  
 04 = adjustable-changeover



Circuit diagram  
 02 = fixed-changeover / 04 = adjustable-changeover

