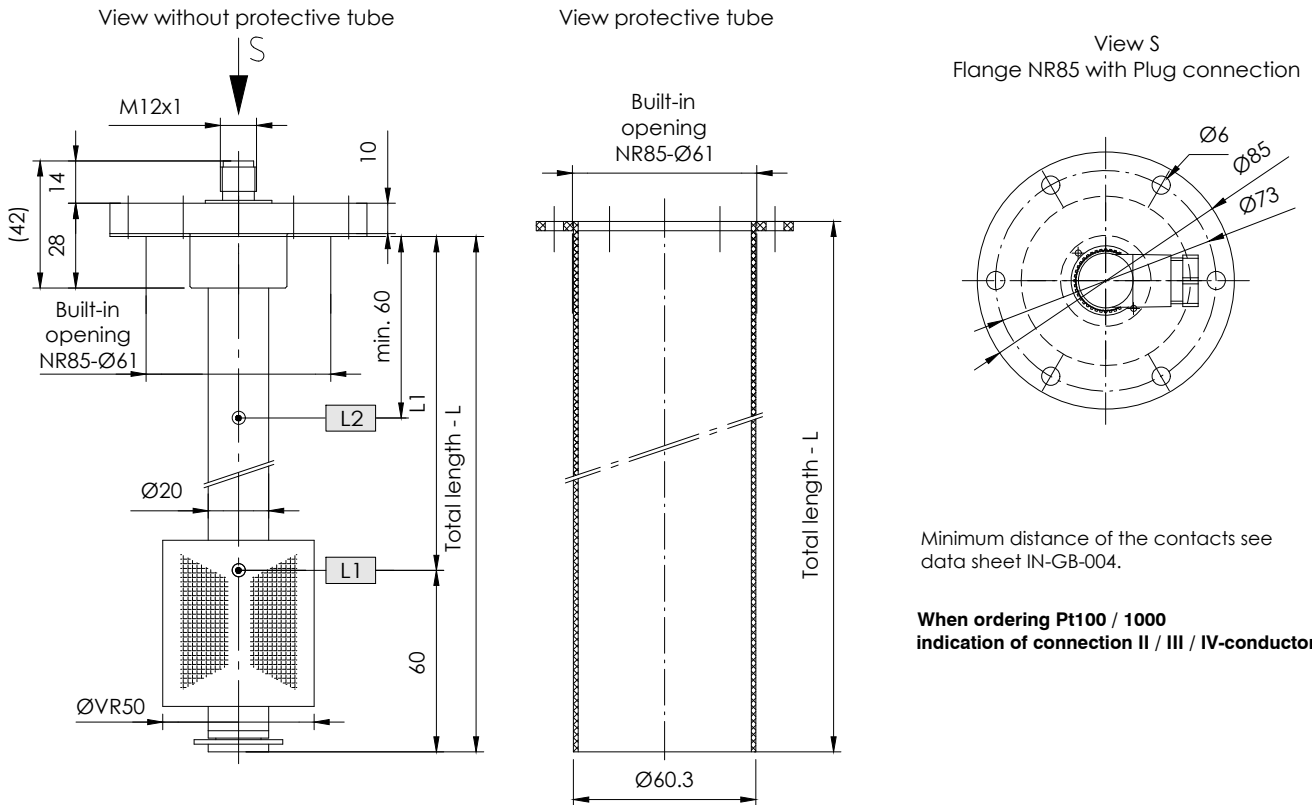


NR 85 - 150°C max.

Level regulator for tank insert

serial No. Date
IN - GB - 108B - 09/23



Specimen order

NR85 - O - VR50 - L370 - 02 - L1/300/S - Pt100 - VA - M12 - 24V-150°C

Order code

Tank connection:
Flange NR85

O=without protective tube
S=Protective tube

Float type
VR50

Total length-L
of switching tube(mm)

Switching point L1-L3/
mm from sealing edge
Ö = break
S = make
W = changeover
Function with
increasing level

Level contact type
02 = fixed, changeover

Pt100
Pt1000

Execution:
VA - Stainless steel
Flange,
Switching tube,
Protective tube
Float

Plug socket connector:
M12 - 24V
3+PE-DIN 43650
6+PE-DIN 43651

Operating voltage
VDC 10-36 = 24V
VAC 10-230 = 250V

Description

The level regulator type NR 85 - 150°C max. for tank insert is a solenoid switch operating without contact with the function of monitoring and regulating liquid levels and temperatures. The switching tube contains bistable protective gas contacts, fixed in position. For fixed contacts, the contact intervals and their functions must be given. The permanent magnet built into the float switches the contacts when the level changes. The switching difference (hysteresis) is 4 mm. For temperature monitoring and regulation, thermal elements such as Pt100 / Pt1000 can be additionally incorporated. The level controller is maintenance - free when nondeposit media are used. For inductive loads, a protective circuit must be provided (free-wheeling diode/RC element).

The device must only be installed by specialists.

Max. viscosity 320mm²/S

Technical data

Protective tube	Stainless steel (VA)
Switching tube	Stainless steel (VA) max. L = 2000mm
Connection flange	NR85, VA with flat seal
Nominal pressure	1 bar max.
Temperature of medium	150°C max.
Float	Stainless steel, Type: VR50
Medium density	0,80 kg/dm ³ min.
Level contacts	bistable make / break / changeover
Operating voltage	250V AC / DC max.
Contact details	Datasheet: IN-GB-004
Thermal elements	Pt100 / Pt1000 DIN EN 60751
Number of functions	Datasheet: IN-GB-005
Mounting position	max. 3 can be incorporated vertical ± 30°

Technical data



GOLDAMMER
REGELUNGSTECHNIK GMBH

SCHÖLLERSHEIDER STR. 15
POSTFACH 10 02 17
D-40802 METTMANN

TELEFON 02104/12093
TELEFAX 02104/12028

www.Goldammer-Regelungstechnik.com
info@goldammer-regelungstechnik.com

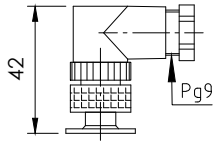
Level regulator

Plug variants and terminal pin assignment

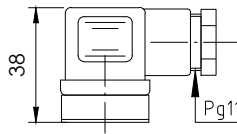
serial No. Date
IN - GB - 108B - 09/23

Standard pin assignment
Function with increasing level / temperature

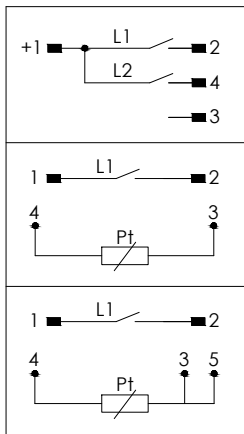
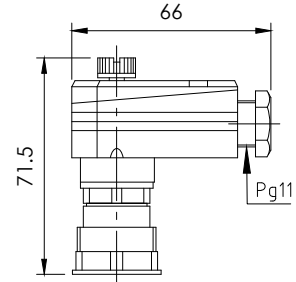
Plug connection
M12 IP67
5-polig



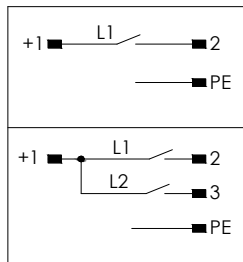
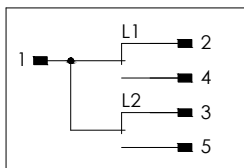
Plug connection
3+PE IP65
EN 175301-803
(DIN 43650)



Plug connection
6+PE IP65
EN 175201-804
(DIN 43651)



Circuit diagram
02 = fixed-changeover



Circuit diagram
02 = fixed-changeover

