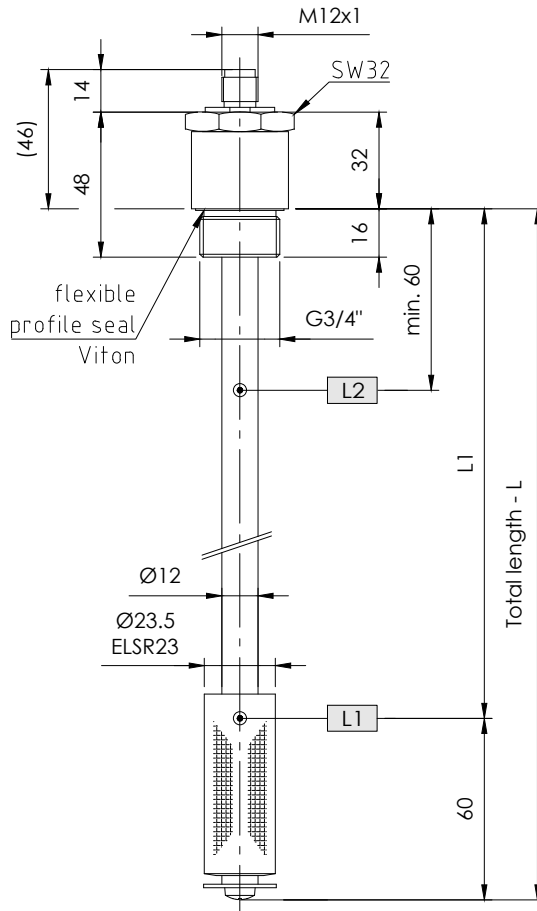


# NR 3/4" - 150°C max.

## Level regulator for tank insert

serial No.    Date  
IN - GB - 112A - 10/23

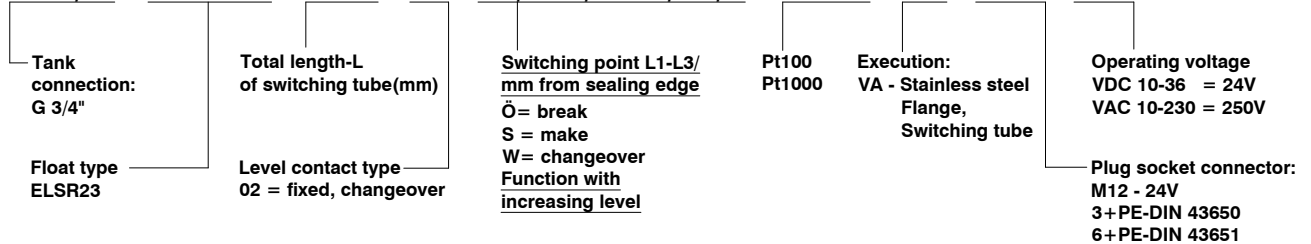


Minimum distance of the contacts see data sheet IN-GB-004.

When ordering Pt100 / 1000 indication of connection II / III / IV-conductors.

### Specimen order

**NR3/4" - ELSR23 - L370 - 02 - L1/300/S-L2/80/S - Pt100 - VA - M12 - 24V - 150°C**



### Description

The level regulator type NR 3/4" - 150°C max. for tank insert is a solenoid switch operating without contact with the function of monitoring and regulating liquid levels and temperatures. The switching tube contains bistable protective gas contacts, fixed in position. For fixed contacts, the contact intervals and their functions must be given. The permanent magnet built into the float switches the contacts when the level changes. The switching difference (hysteresis) is 4 mm. For temperature monitoring and regulation, thermal elements such as Pt100 / Pt1000 can be additionally incorporated. The level controller is maintenance - free when nondeposit media are used. For inductive loads, a protective circuit must be provided (free-wheeling diode/RC element).

The device must only be installed by specialists.

Max. viscosity 150mm<sup>2</sup>/S

### Technical data

Switching tube	Stainless steel (VA) max. L = 1000mm
Connection flange	VA: G3/4", SW32 with Viton-flexible profile seal
Nominal pressure	10 bar max.
Temperature of medium	150°C max.
Float	Ceramic, Type: ELSR23
Medium density	0,80 kg/dm <sup>3</sup> min.
Level contacts	bistable make / break / changeover
Operating voltage	250V AC / DC max.
Contact details	Datasheet: IN-GB-004
Thermal elements	Pt100 / Pt1000 DIN EN 60751 Datasheet: IN-GB-005
Number of functions	max. 3 can be incorporated
Mounting position	vertical ± 30°

Order code

Technical data



**GOLDAMMER**  
REGELUNGSTECHNIK GMBH

SCHÖLLERSHEIDER STR. 15  
POSTFACH 10 02 17  
D-40802 METTMANN

TELEFON 02104/12093  
TELEFAX 02104/12028

www.Goldammer-Regelungstechnik.com  
info@goldammer-regelungstechnik.com

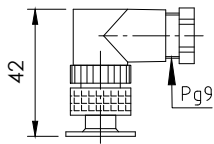
# Level regulator

## Plug variants and terminal pin assignment

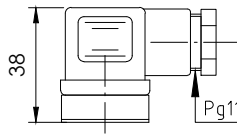
serial No. Date  
IN - GB - 112A - 10/23

Standard pin assignment  
Function with increasing level / temperature

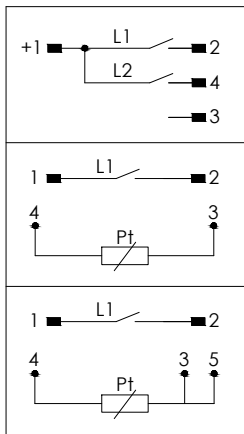
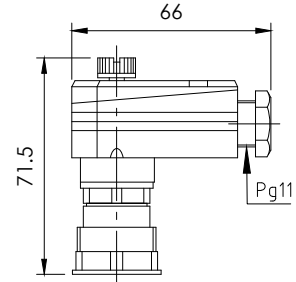
Plug connection  
M12 IP67  
5-polig



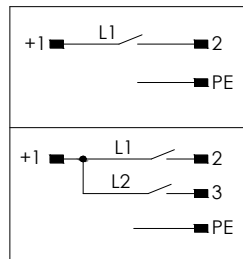
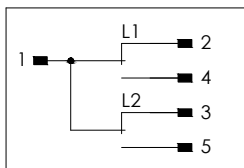
Plug connection  
3+PE IP65  
EN 175301-803  
(DIN 43650)



Plug connection  
6+PE IP65  
EN 175201-804  
(DIN 43651)



Circuit diagram  
02 = fixed-changeover



Circuit diagram  
02 = fixed-changeover

