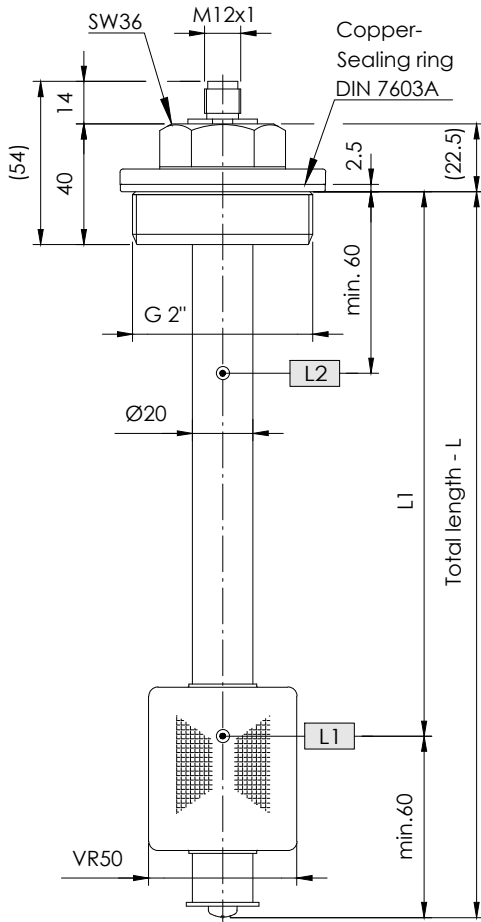


NR 2" - 150°C max.

Level regulator for tank insert

serial No. Date
IN - GB - 115C - 02/24



Minimum distance of the contacts
see data sheet IN-D-004.

When ordering Pt100 / 1000
indication of connection II / III / IV- conductors.

Order code

Specimen order

NR 2"-VR50-L370-02-L1/300/S-Pt100-VA-M12-24V-150°C

Tank
connection:
G 2"

Float type
VR50

Total length-L
of switching tube(mm)

Level contact type
02 = fixed, changeover

Switching point L1-L3/
mm from sealing edge
Ö = break
S = make
W = changeover
Function with
increasing level

Pt100
Pt1000

Plug socket
connector:
M12 - 24V
3+PE-DIN 43650
3 pol. + PE
6+PE-DIN 43651
6 pol. + PE

Operating voltage
VDC 10-36 = 24V
VAC 10-230 = 250V

Execution:
VA - Stainless steel
Connection thread,
Switching tube,
Float

Description

The level regulator type NR 2" - 150°C max. for tank insert is a solenoid switch operating without contact with the function of monitoring and regulating liquid levels and temperatures. The switching tube contains bistable protective gas contacts, fixed in position.

For fixed contacts, the contact intervals and their functions must be given.

The permanent magnet built into the float switches the contacts when the level changes.

The switching difference (hysteresis) is 4 mm.

For temperature monitoring and regulation, thermal elements such as Pt100 / Pt1000 can be additionally incorporated.

The level controller is maintenance - free when nondeposit media are used.

For inductive loads, a protective circuit must be provided (free-wheeling diode/RC element).

The device must only be installed by specialists.

Max. viscosity 320mm²/S

Technical data

Switching tube	Stainless steel (VA) max. L = 3000mm
Connection thread	G 2", SW36 - Stainless steel with Copper - Sealing ring
Nominal pressure	10 bar max. - Float VR50
Temperature of medium	150°C max.
Float	Stainless steel, Type: VR50
Medium density	0,80 kg/dm ³ min.
Level contacts	bistable make / break / changeover
Operating voltage	250V AC /DC max.
Contact details	Datasheet: IN-GB-004
Thermal elements	Pt100 / Pt1000 DIN EN 60751 Datasheet: IN-GB-005
Number of functions	max. 3 can be incorporated
Mounting position	vertical ± 30°

Technical data



GOLDAMMER
REGELUNGSTECHNIK GMBH

SCHÖLLERSHEIDER STR. 15
POSTFACH 10 02 17
D-40802 METTMANN

TELEFON 02104/12093
TELEFAX 02104/12028

www.Goldammer-Regelungstechnik.com
info@goldammer-regelungstechnik.com

Level regulator

Plug variants and terminal pin assignment

serial No. Date
IN - GB - 115C - 02/24

Standard pin assignment
Function with increasing level / temperature

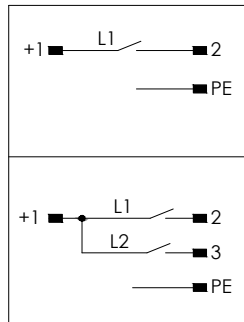
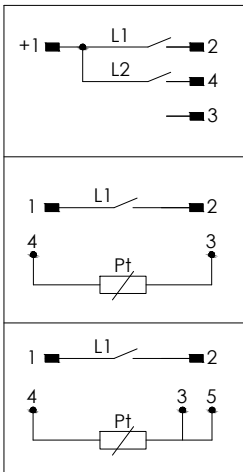
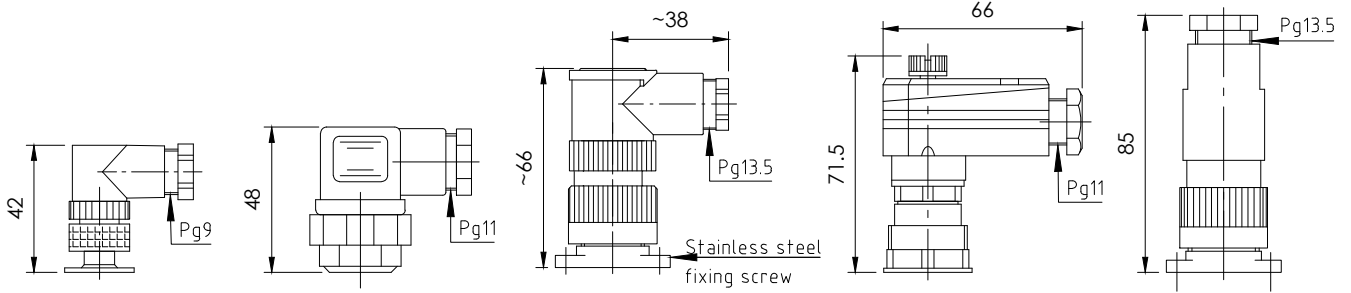
Plug connection
M12 IP67
5-polig

Plug connection
3+PE IP65
EN 175301-803
(DIN 43650)

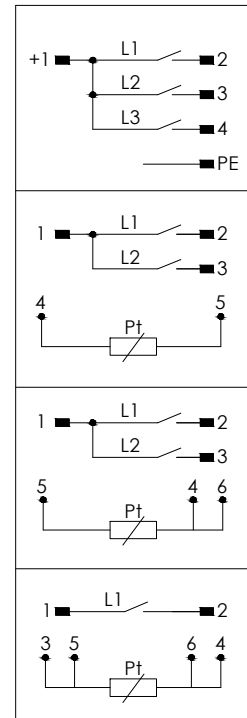
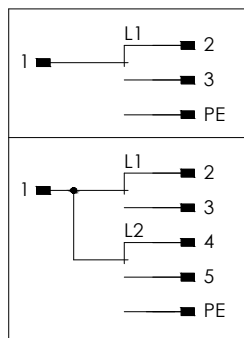
Plug connection
3 pol.+PE
IP67

Plug connection
6+PE IP65
EN 175201-804
(DIN 43651)

Plug connection
6 pol.+PE
IP67



Circuit diagram
02 = fixed-changeover



Circuit diagram
02 = fixed-changeover

