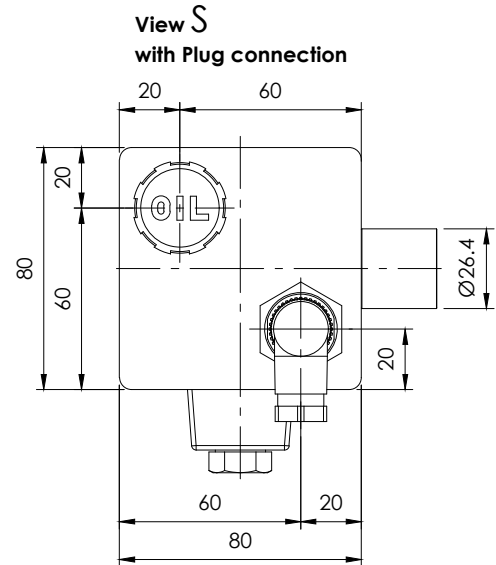
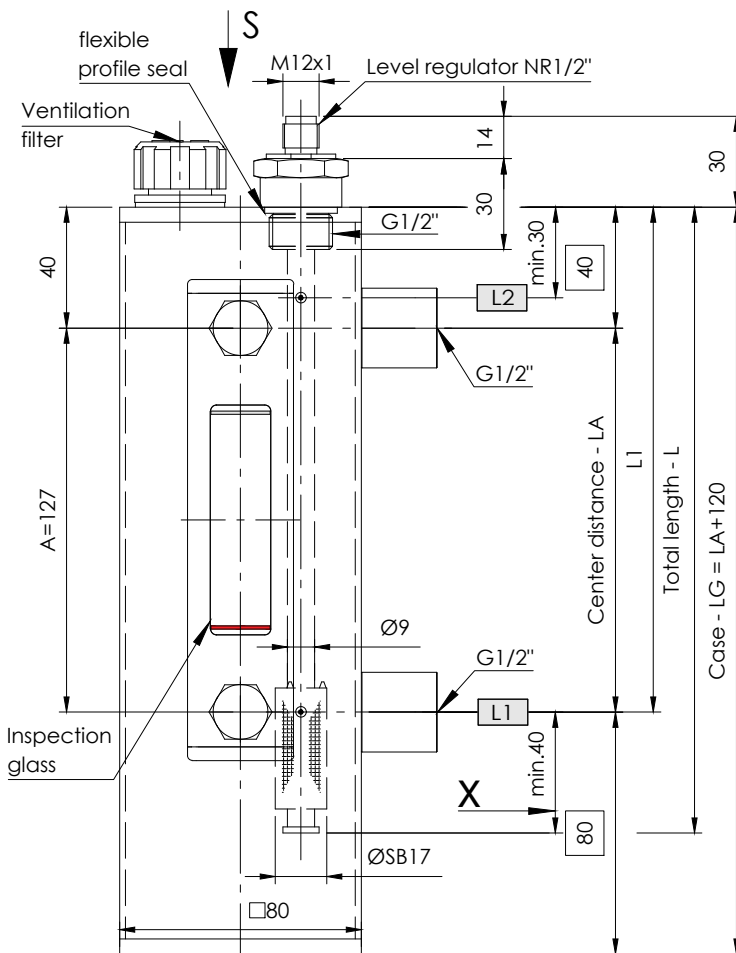


NRA - BLA - G1/2"

Level regulator for tank surface mounting

serial No. Date
AM - GB - 200/2 - 08/23



Minimum distance of the contacts
see data sheet IN-D-003.

$X = L1 - L2 + 1$ Thermal contact + 60mm
 $L1 - L2 + Pt100 / 1000$ + 55mm
 When ordering Pt100 / 1000
 indication of connection II or III - conductors.

Specimen order

NRA-BLA-G1/2"-LG230-01-L1/160/S-L2/40/Ö-T70Ö-M12-24V

Order code

Tank connection:
G1/2"

Case length
LG (mm)

Level contact type
01 = fixed, plain

Switching point L1-L2/
mm from sealing edge
 Ö = break
 S = make
 Function with
 increasing level

Pt100
 Pt1000
 Thermal contact
 T10Ö
 T40Ö
 T50Ö
 T60Ö (S)
 T70Ö (S) (Ö preferred)
 T80Ö (S)
 T90Ö
 (Indicate T1... - T2... for two thermal contacts)

Operating voltage
 VDC 10-36 = 24V
 VAC 10-230 = 250V

Plug socket connector:
 M12 - 24V
 DIN 43651
 3+PE

Description

The level regulator type NRA - BLA - G1/2" consists of a surface mounting tank with inspection glass for the installation of a level regulator.

The level regulator type NR 1/2" for tank insert is a solenoid switch operating without contact with the function of monitoring and regulating liquid levels and temperatures. The switching tube contains bistable protective gas contacts, fixed in position. For fixed contacts, the contact intervals and their function must be given.

The permanent magnet built into the float switches the contacts when the level changes. The switching difference (hysteresis) is 4 mm.

For temperature monitoring and regulation, thermal elements such as thermal contacts or Pt100 / Pt1000 can be additionally incorporated.

For visual inspection, a level indicator A=127mm as well as a ventilation filter is attached.

The level regulator is maintenance - free when nondeposit media are used.

For inductive loads, a protective circuit must be provided (free-wheeling diode/RC element).

The device must only be installed by specialists.

Max. viscosity 150mm²/S

Technical data

Technical data

Addition case	Stainless steel (VA)
Tank connection	G 1/2"
Switching tube	Brass, max. L =800mm
Connection	Brass: G 1/2", SW27
Nominal pressure	1 bar max.
Temperature of medium	80°C max.
Float	Hart Pu, Type: SB17
Medium density	0,80 kg/dm ³ min.
Level contacts	bistabil, Make / Break
Operating voltage	250V AC /DC max.
Contact details	Datasheet: IN-D-003
Thermal elements	Pt100 / Pt1000 DIN EN 60751
	Datasheet: IN-D-005
Thermal contacts	Switchpoint: ± 5K
	Hysteresis: 20K ± 5K
Number of functions	max. 3 can be incorporated
Mounting position	vertical ± 30°



GOLDAMMER
 REGELUNGSTECHNIK GMBH

SCHÖLLERSHEIDER STR. 15
 POSTFACH 10 02 17
 D-40802 METTMANN

TELEFON 02104/12093
 TELEFAX 02104/12028

www.Goldammer-Regelungstechnik.com
 info@goldammer-regelungstechnik.com

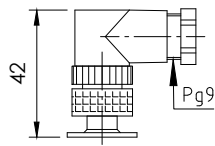
Level regulator

Plug variants and terminal pin assignment

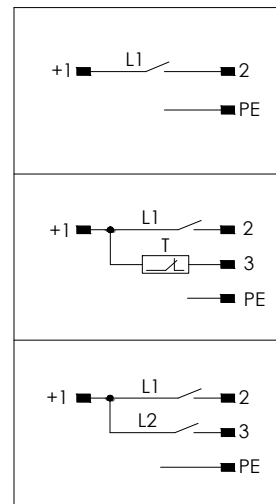
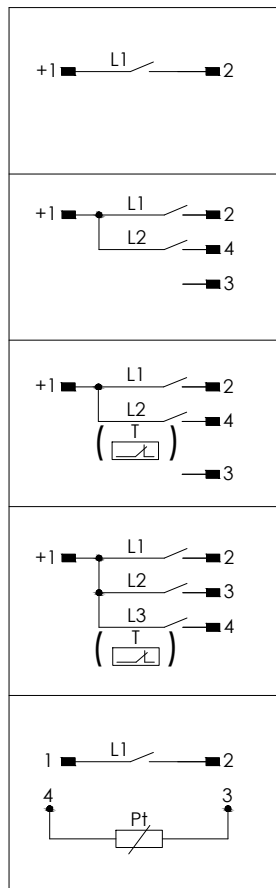
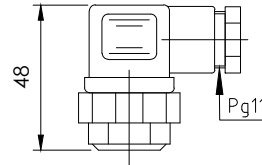
serial No. Date
AM - GB - 200/2 - 08/23

Standard pin assignment
 Function with increasing level / temperature

Plug connection
 M12 IP67
 5-polig



Plug connection
 3+PE IP65
 EN 175301-803
 (DIN 43650)



Plug assignment
 Level + Thermal contacts
 L + T1 + T2

