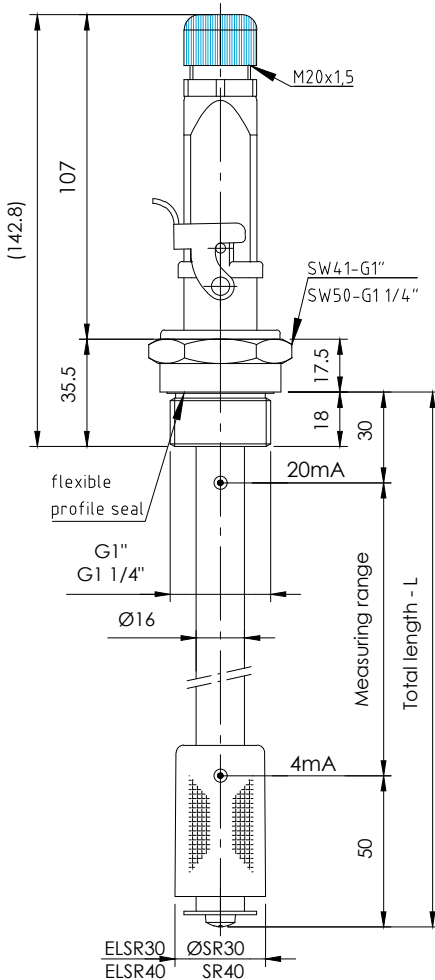


NR 1" - 1 1/4" - MA - EExi

Level - temperature regulator with resistance measuring chain and resistance thermometer, output 4-20 mA



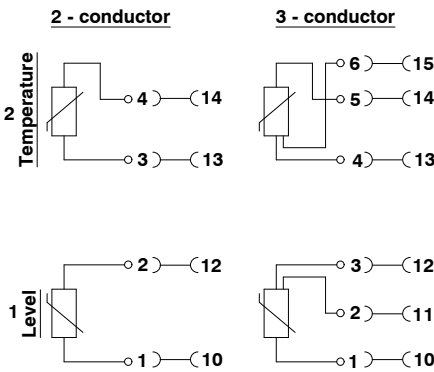
serial No. Date
EX - GB - 305B 10/24



Plug assignment

Order code

Input Configuration



Ex-Zone

No-Ex-Zone



contained in the scope of delivery:
0/4-20mA Transmitter - sheet EX-GB-902
Measuring range configured
Item number 9182/10-51-13 - 1-channel level
Item number 9182/20-51-11 - 2-channel level
+ temperature

Specimen order

NR1" - EExi - MA - SR30 - L370 - T - MS - II - M12

Tank connection:
G1"
G1 1/4"

Float type
SR30, ELSR30
SR40, ELSR40

T = Temperature
O = without
Temperature

Plug socket connector:
M12 - 24V
3+PE-DIN 43650
6+PE-DIN 43651
HAN I
HAN II

Total length-L (special length)
switching tube (mm)
Standard length

L=250 L= 700
L=370 L= 800
L=500 L= 900
L=600 L=1000

Execution:
MS -Brass
VA - Stainless steel,
Tank connection,
Switching tube

II = 2 - conductor
III = 3 - conductor

Connector variants

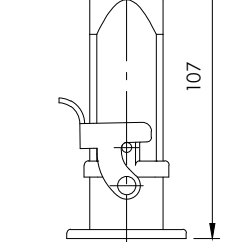
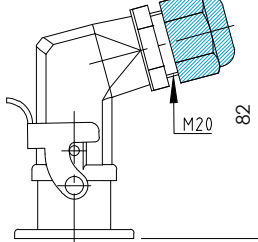
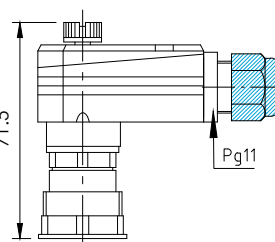
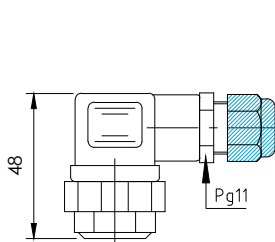
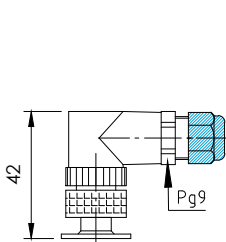
Plug connection
M12 IP67
5-polig

Plug connection
3+PE IP65
EN 175301-803
(DIN 43650)

Plug connection
6+PE IP65
EN 175201-804
(DIN 43651)

HAN I
IP65

HAN II
IP65



Description

The level temperature regulator, type NR 1" - 1 1/4" - MA - EExi designed for container installation, is a contactless electromagnetic switch serving for continuous teletransmission of liquid levels and temperature.

Via cables of any length, level and temperature can be continuously evaluated for automatic control and display. The level controller contains a resistance measuring chain and a Pt100 resistor.

When the fill level changes, the total resistance changes and is converted to 4-20mA using an Ex-approved measuring transducer (sheet EX-D-902) that is installed in the non-Ex area. When the temperature changes, the Pt100 changes its resistance and is also converted to 4-20mA in the non-Ex area.

The level controller is maintenance-free when nondeposit media are used.

The device must only be installed by specialists.

Max. viscosity 150mm²/S

Technical data

Switching tube	Brass (MS), Stainless steel (VA) max. L = 1500mm
Tank connection	MS / VA : G 1", SW41 MS / VA : G 1 1/4", SW50
Nominal pressure	1 bar max.
Temperature of medium	100°C max.
Float	Hart-PU, Type: SR30 / SR40 Ceramic, Type: ELSR30 / ELSR40
Measuring range	4-20 mA = 0-100°C
Thermal element	Pt100, II / III-Conductor
Measuring chain	II / III - conductor for connection to EExi measuring transducers
Contact grid	7,5mm
Installed position	vertical ± 30°
Other temperature ranges on request.	



GOLDAMMER
REGELUNGSTECHNIK GMBH

SCHÖLLERSHEIDER STR. 15
POSTFACH 10 02 17
D-40802 METTMANN

TELEFON 02104/12093
TELEFAX 02104/12028

www.Goldammer-Regelungstechnik.com
info@goldammer-regelungstechnik.com